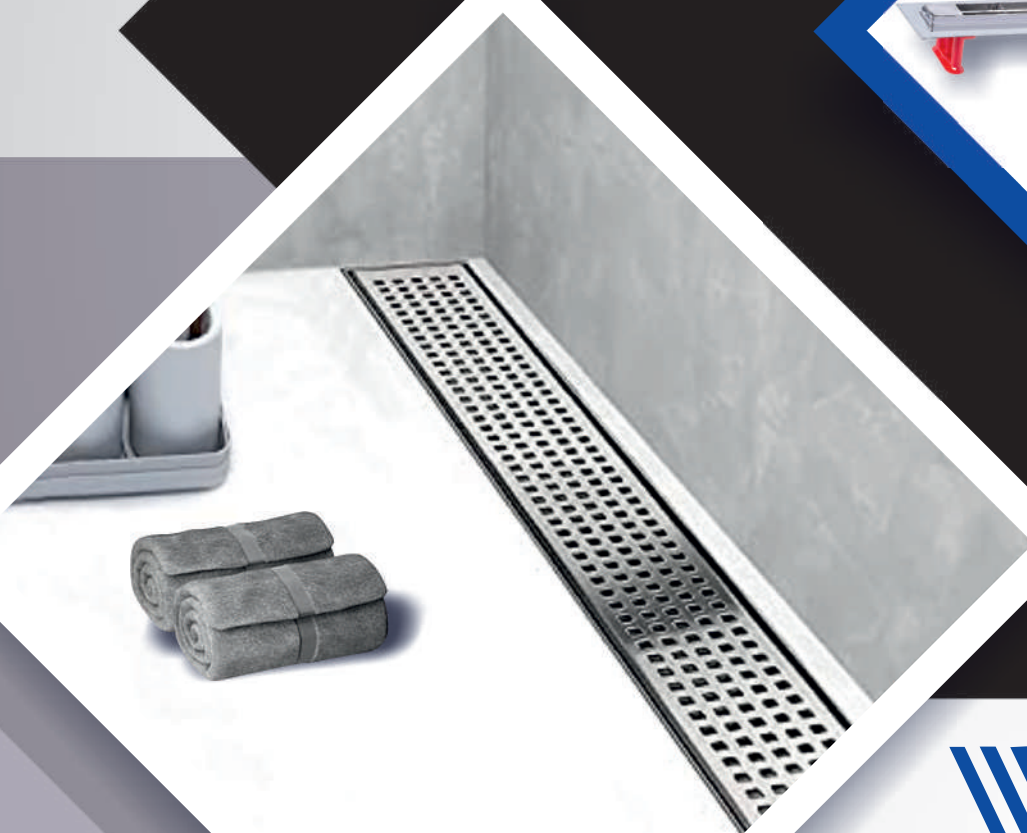


THE BEST SOLUTION FOR YOUR BATHROOM

Linear Shower Drains



VILLOREN



VILLOREN

FORTE



▶ FORTE DIRECT SHOWER DRAIN

CODE	SIZE	PCS IN
BFM.100P.20.01	20 CM	12
BFM.100P.30.01	30 CM	12
BFM.100P.40.01	40 CM	12
BFM.100P.50.01	50 CM	12
BFM.100P.60.01	60 CM	12
BFM.100P.70.01	70 CM	12
BFM.100P.80.01	80 CM	12



▶ FORTE ROTATION SHOWER DRAIN

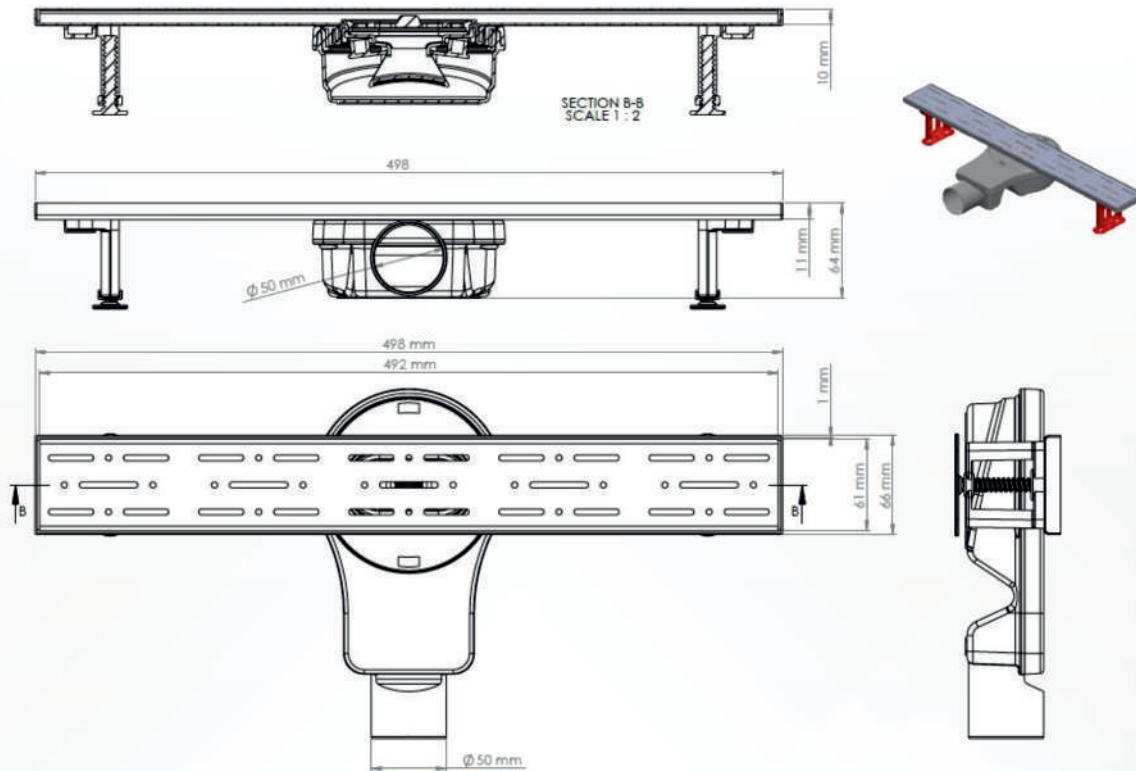
CODE	SIZE	PCS IN
BFM.100Y.20.01	20 CM	12
BFM.100Y.30.01	30 CM	12
BFM.100Y.40.01	40 CM	12
BFM.100Y.50.01	50 CM	12
BFM.100Y.60.01	60 CM	12
BFM.100Y.70.01	70 CM	12
BFM.100Y.80.01	80 CM	12



▶ FORTE 100 DIRECT SHOWER DRAIN

CODE	SIZE	PCS IN
BFM.100K.20.01	20 CM	12
BFM.100K.30.01	30 CM	12
BFM.100K.40.01	40 CM	12
BFM.100K.50.01	50 CM	12
BFM.100K.60.01	60 CM	12
BFM.100K.70.01	70 CM	12
BFM.100K.80.01	80 CM	12

FORTE SHOWER DRAIN



DN 50 Horizontal and vertical outlet - compatible with PVC pipe connections, blocking odor by water (285mg). The flow rate is 48 liters/min. Resistant against external chemical effects, operating temperature is between -30°C and +75°C. The and grid is made of 304 grade stainless steel.

Advantages

It has a quality and stylish-looking with its 304 grade stainless steel grid. It can be easily applied on the floor. It prevents the bad smell coming from the waste water system with its two cleppers o'dor blocking and "S TYPE" outlet . It can be adjusted depending on the screed concrete with its adjustable height legs. High resistance against the organic and inorganic chemicals, resistant against most acidic and salty aqueous oxidation.

Areas of Usage

Common use of bathroom shower, hospital and hotel shower areas, locker-room shower areas etc.

Customized Production

Grid patterns can be chosen in gold, bronze or other optional colors in accordance with your desire.

Warning

It is not recommended to use high-density cleaners for a long-time.

* The referring size is 50 cm

ALFA



▶ ALFA DIRECT SHOWER DRAIN

CODE	SIZE	PCS IN
BFM.101P.20.01	20 CM	12
BFM.101P.30.01	30 CM	12
BFM.101P.40.01	40 CM	12
BFM.101P.50.01	50 CM	12
BFM.101P.60.01	60 CM	12
BFM.101P.70.01	70 CM	12
BFM.101P.80.01	80 CM	12



▶ ALFA ROTATION SHOWER DRAIN

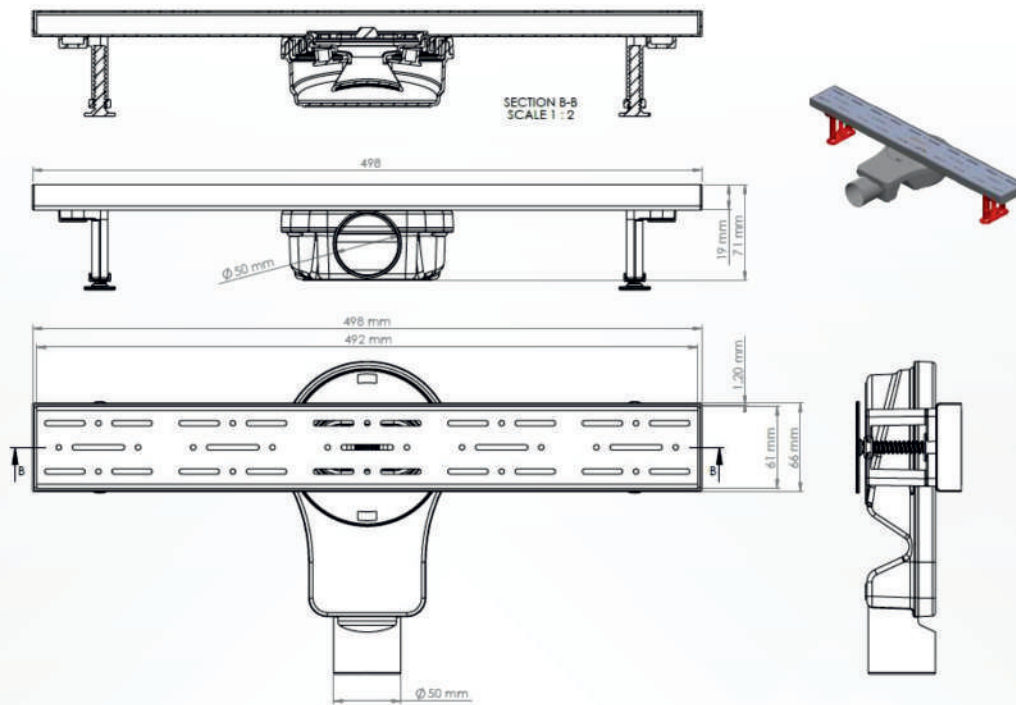
CODE	SIZE	PCS IN
BFM.101Y.20.E1	20 CM	12
BFM.101Y.30.E1	30 CM	12
BFM.101Y.40.E1	40 CM	12
BFM.101Y.50.E1	50 CM	12
BFM.101Y.60.E1	60 CM	12
BFM.101Y.70.E1	70 CM	12
BFM.101Y.80.E1	80 CM	12



▶ ALFA 100 DIRECT SHOWER DRAIN

CODE	SIZE	PCS IN
BFM.101K.20.E1	20 CM	12
BFM.101K.30.E1	30 CM	12
BFM.101K.40.E1	40 CM	12
BFM.101K.50.E1	50 CM	12
BFM.101K.60.E1	60 CM	12
BFM.101K.70.E1	70 CM	12
BFM.101K.80.E1	80 CM	12

ALFA SHOWER SHOWER DRAIN



DN 50 Horizontal and vertical outlet - compatible with PVC pipe connections, blocking odor by water (285mg). The flow rate is 48 liters/min. Resistant against external chemical effects, operating temperature is between -30°C and $+75^{\circ}\text{C}$. The and grid is made of 304 grade stainless steel.

Advantages

It has a quality and stylish-looking with its 304 grade stainless steel grid. It can be easily applied on the floor. It prevents the bad smell coming from the waste water system with its two cleppers o'dor blocking and "S TYPE" outlet . It can be adjusted depending on the screed concrete with its adjustable height legs. High resistance against the organic and inorganic chemicals, resistant against most acidic and salty aqueous oxidation.

Areas of Usage

Common use of bathroom shower, hospital and hotel shower areas, locker-room shower areas etc.

Customized Production

Grid patterns can be chosen in gold, bronze or other optional colors in accordance with your desire.

Warning

It is not recommended to use high-density cleaners for a long-time.

* The referring size is 50 cm

GALA



► GALA DIRECT SHOWER DRAIN

CODE	SIZE	PCS IN
BFM.102P.20.01	20 CM	12
BFM.102P.30.01	30 CM	12
BFM.102P.40.01	40 CM	12
BFM.102P.50.01	50 CM	12
BFM.102P.60.01	60 CM	12
BFM.102P.70.01	70 CM	12
BFM.102P.80.01	80 CM	12



► GALA ROTATION SHOWER DRAIN

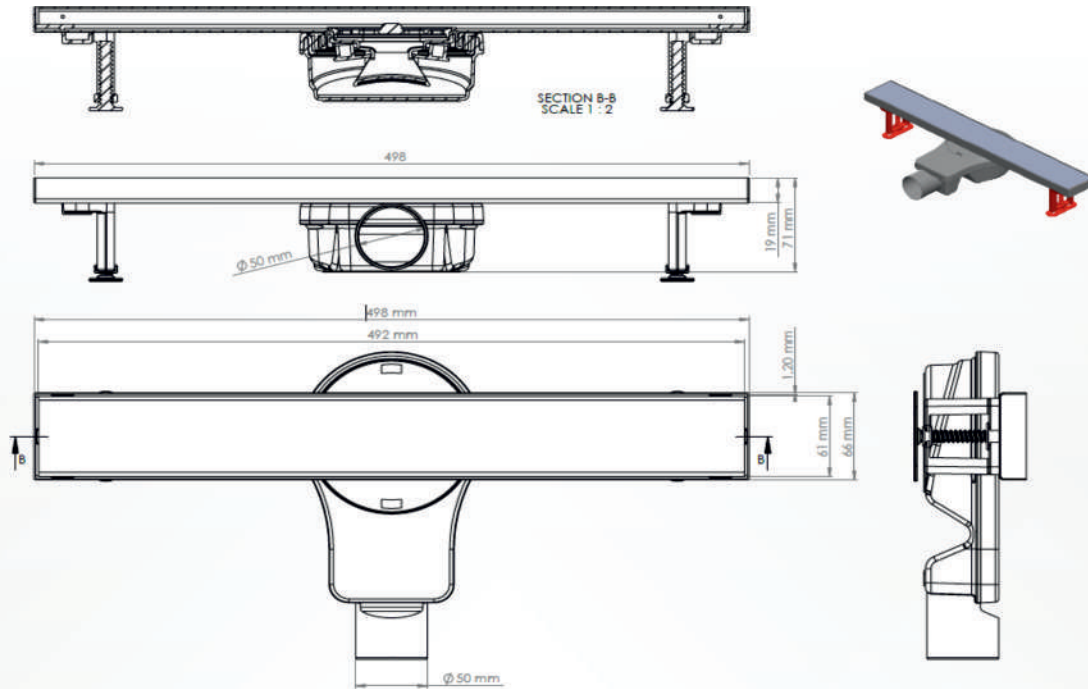
CODE	SIZE	PCS IN
BFM.102Y.20.E1	20 CM	12
BFM.102Y.30.E1	30 CM	12
BFM.102Y.40.E1	40 CM	12
BFM.102Y.50.E1	50 CM	12
BFM.102Y.60.E1	60 CM	12
BFM.102Y.70.E1	70 CM	12
BFM.102Y.80.E1	80 CM	12



► GALA 100 DIRECT SHOWER DRAIN

CODE	SIZE	PCS IN
BFM.102K.20.E1	20 CM	12
BFM.102K.30.E1	30 CM	12
BFM.102K.40.E1	40 CM	12
BFM.102K.50.E1	50 CM	12
BFM.102K.60.E1	60 CM	12
BFM.102K.70.E1	70 CM	12
BFM.102K.80.E1	80 CM	12

GALA SHOWER DRAIN



DN 50 Horizontal and vertical outlet - compatible with PVC pipe connections, blocking odor by water (285mg). The flow rate is 48 liters/min. Resistant against external chemical effects, operating temperature is between -30°C and +75°C. The and grid is made of 304 grade stainless steel.

Advantages

It has a quality and stylish-looking with its 304 grade stainless steel grid. It can be easily applied on the floor. It prevents the bad smell coming from the waste water system with its two cleppers o'dor blocking and "S TYPE" outlet . It can be adjusted depending on the screed concrete with its adjustable height legs. High resistance against the organic and inorganic chemicals, resistant against most acidic and salty aqueous oxidation.

Areas of Usage

Common use of bathroom shower, hospital and hotel shower areas, locker-room shower areas etc.

Customized Production

Grid patterns can be chosen in gold, bronze or other optional colors in accordance with your desire.

Warning

It is not recommended to use high-density cleaners for a long-time.

* The referring size is 50 cm

SINGLE LINE



▶ SINGLE LINE DIRECT SHOWER DRAIN

CODE	SIZE	PCS IN
BFM.103P.30.01	30 CM	12
BFM.103P.40.01	40 CM	12
BFM.103P.50.01	50 CM	12
BFM.103P.60.01	60 CM	12

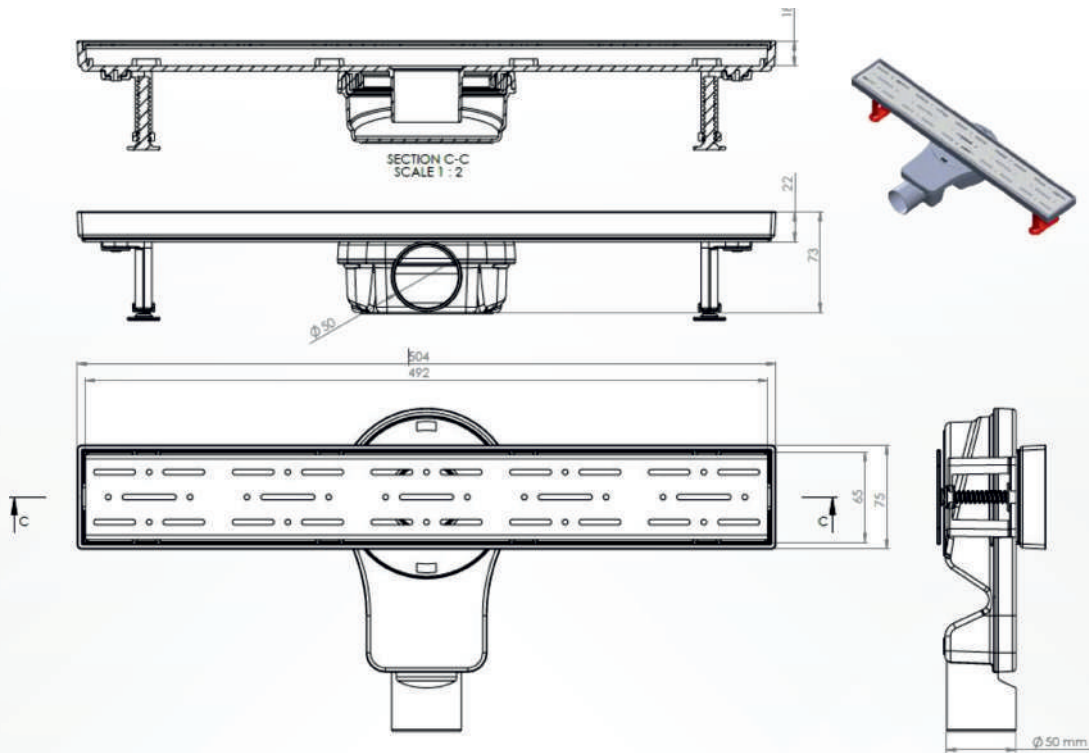
360°



▶ SINGLE LINE ROTATION SHOWER DRAIN

CODE	SIZE	PCS IN
BFM.103Y.30.01	30 CM	12
BFM.103Y.40.01	40 CM	12
BFM.103Y.50.01	50 CM	12
BFM.103Y.60.01	60 CM	12

SINGLE LINE SHOWER DRAIN



DN 50 Horizontal and vertical outlet - compatible with PVC pipe connections, blocking odor by water (285mg). The flow rate is 41 liters/min. Resistant against external chemical effects, operating temperature is between -30°C and $+75^{\circ}\text{C}$. The and grid is made of 304 grade stainless steel.

Advantages

It has a quality and stylish-looking with its 304 grade stainless steel grid. It can be easily applied on the floor. It prevents the bad smell coming from the waste water system with its two cleppers o'dor blocking and "S TYPE" outlet . It can be adjusted depending on the screed concrete with its adjustable height legs. High resistance against the organic and inorganic chemicals, resistant against most acidic and salty aqueous oxidation.

Areas of Usage

Common use of bathroom shower, hospital and hotel shower areas, locker-room shower areas etc.

Customized Production

Grid patterns can be chosen in gold, bronze or other optional colors in accordance with your desire.

Warning

It is not recommended to use high-density cleaners for a long-time.

* The referring size is 50 cm

DIAMOND



▶ DIAMOND DIRECT SHOWER DRAIN

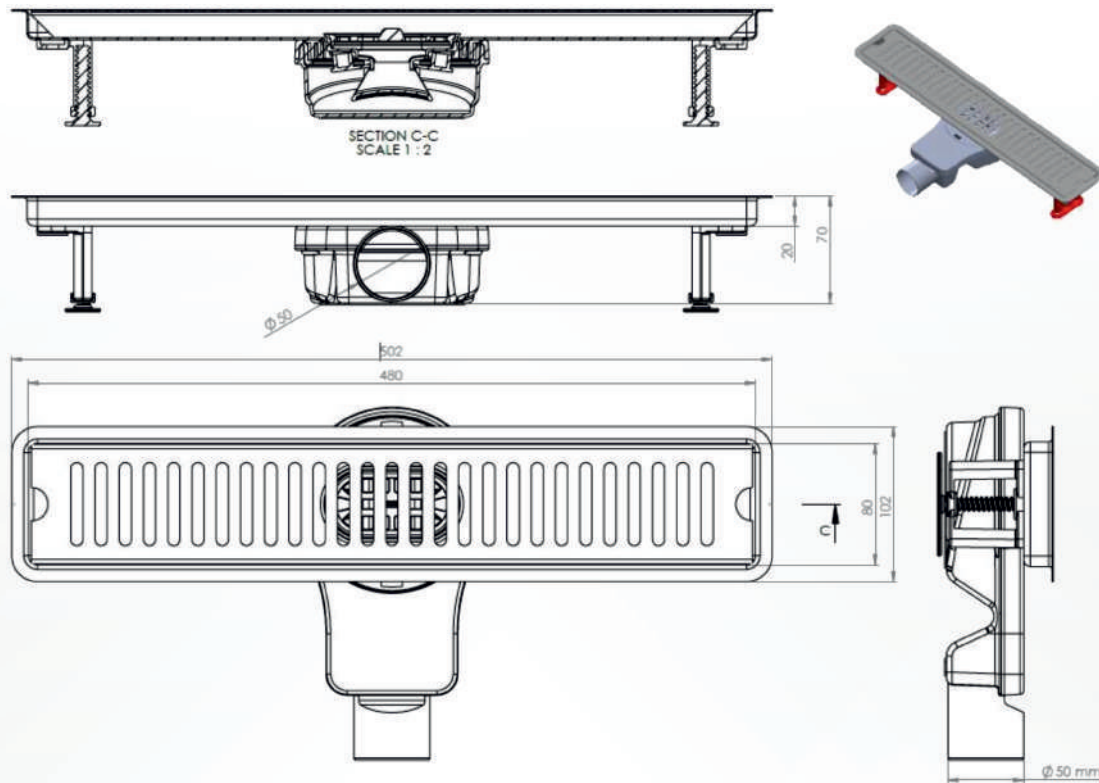
CODE	SIZE	PCS IN
BFM.104P.20.01	20 CM	12
BFM.104P.30.01	30 CM	12
BFM.104P.40.01	40 CM	12
BFM.104P.50.01	50 CM	12
BFM.104P.60.01	60 CM	12



▶ DIAMOND ROTATION SHOWER DRAIN

CODE	SIZE	PCS IN
BFM.104Y.20.01	20 CM	12
BFM.104Y.30.01	30 CM	12
BFM.104Y.40.01	40 CM	12
BFM.104Y.50.01	50 CM	12
BFM.104Y.60.01	60 CM	12

DIAMOND SHOWER DRAIN



DN 50 Horizontal and vertical outlet - compatible with PVC pipe connections, blocking odor by water (285mg). The flow rate is 41 liters/min. Resistant against external chemical effects, operating temperature is between -30°C and $+75^{\circ}\text{C}$. The and grid is made of 304 grade stainless steel.

Advantages

It has a quality and stylish-looking with its 304 grade stainless steel grid. It can be easily applied on the floor. It prevents the bad smell coming from the waste water system with its two cleppers o'dor blocking and "S TYPE" outlet . It can be adjusted depending on the screed concrete with its adjustable height legs. High resistance against the organic and inorganic chemicals, resistant against most acidic and salty aqueous oxidation.

Areas of Usage

Common use of bathroom shower, hospital and hotel shower areas, locker-room shower areas etc.

Customized Production

Grid patterns can be chosen in gold, bronze or other optional colors in accordance with your desire.

Warning

It is not recommended to use high-density cleaners for a long-time.

* The referring size is 50 cm

LUNA



360°



360°



360°



360°

LUNA SHOWER DRAIN

CODE	SIZE	PCS IN
BFM.115Y.30.01	30 CM	12
BFM.115Y.40.01	40 CM	12
BFM.115Y.50.01	50 CM	12
BFM.115Y.60.01	60 CM	12
BFM.115Y.80.01	80 CM	12

LUNA GALA SHOWER DRAIN

CODE	SIZE	PCS IN
BFM.115D.30.01	30 CM	12
BFM.115D.40.01	40 CM	12
BFM.115D.50.01	50 CM	12
BFM.115D.60.01	60 CM	12
BFM.115D.80.01	80 CM	12

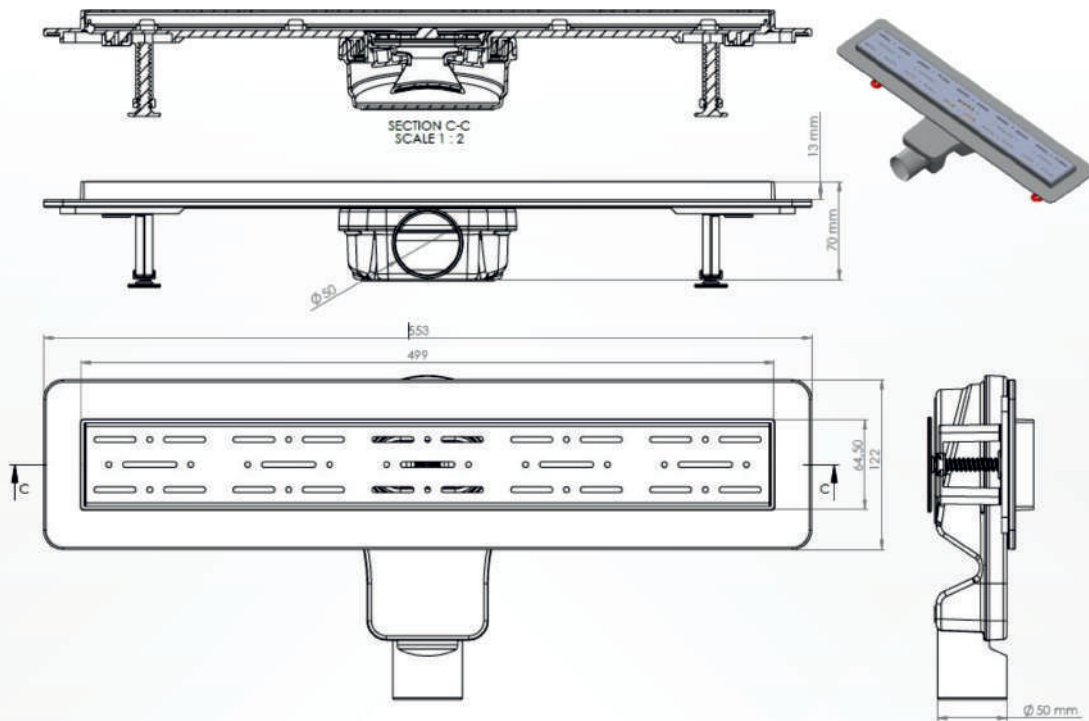
LUNA GALA FRAMED SHOWER DRAIN

CODE	SIZE	PCS IN
BFM.115F.30.01	30 CM	12
BFM.115F.40.01	40 CM	12
BFM.115F.50.01	50 CM	12
BFM.115F.60.01	60 CM	12
BFM.115F.80.01	80 CM	12

LUNA FRAMED SHOWER DRAIN

CODE	SIZE	PCS IN
BFM.115L.30.01	30 CM	12
BFM.115L.40.01	40 CM	12
BFM.115L.50.01	50 CM	12
BFM.115L.60.01	60 CM	12
BFM.115L.80.01	80 CM	12

LUNA SHOWER DRAIN



DN 50 Horizontal and vertical outlet - compatible with PVC pipe connections, blocking odor by water (285mg). The flow rate is 48 liters/min. Resistant against external chemical effects, operating temperature is between -30°C and $+75^{\circ}\text{C}$. The and grid is made of 304 grade stainless steel.

Advantages

It has a quality and stylish-looking with its 304 grade stainless steel grid. It can be easily applied on the floor. It prevents the bad smell coming from the waste water system with its two cleppers o'dor blocking and "S TYPE" outlet . It can be adjusted depending on the screed concrete with its adjustable height legs. High resistance against the organic and inorganic chemicals, resistant against most acidic and salty aqueous oxidation.

Areas of Usage

Common use of bathroom shower, hospital and hotel shower areas, locker-room shower areas etc.

Customized Production

Grid patterns can be chosen in gold, bronze or other optional colors in accordance with your desire.

Warning

It is not recommended to use high-density cleaners for a long-time.

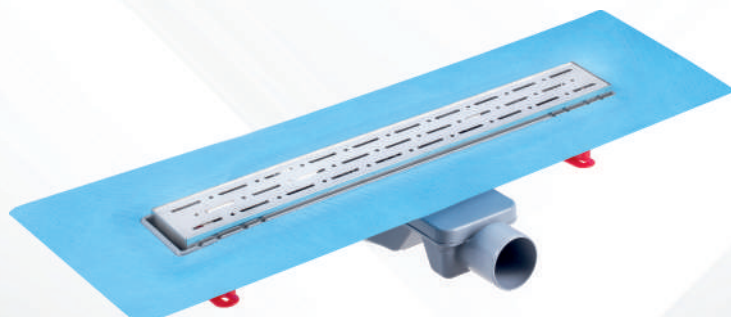
* The referring size is 50 cm

MAXIMA



▶ MAXIMA SHOWER DRAIN

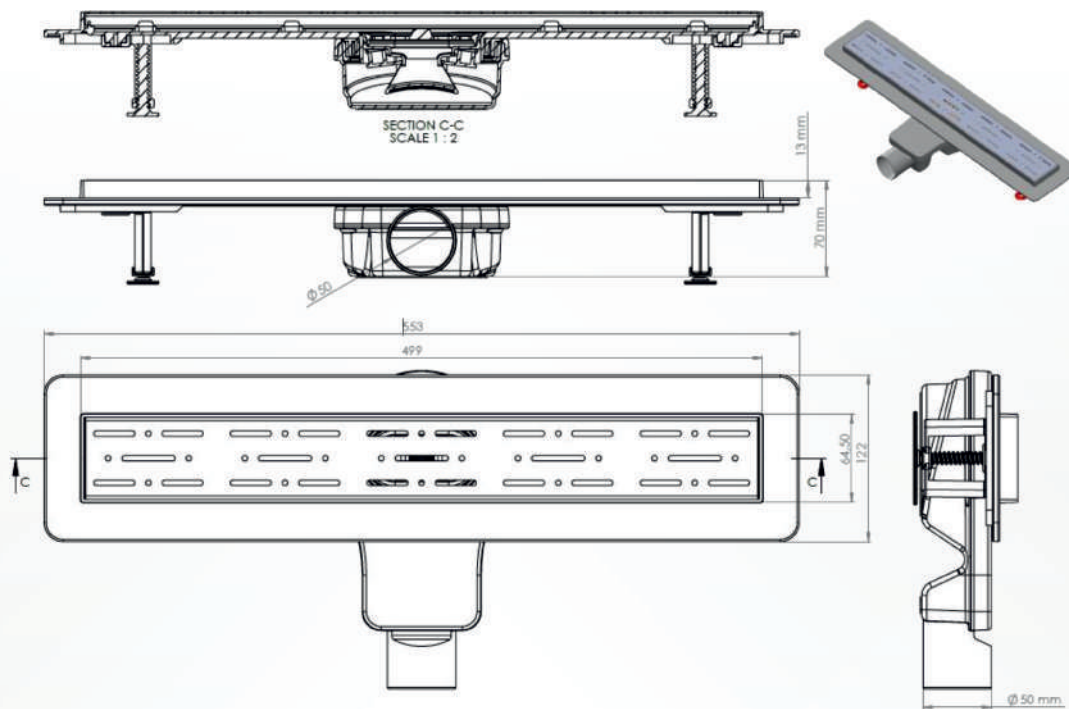
CODE	SIZE	PCS IN
BFM.117Y.30.01	30 CM	12
BFM.117Y.40.01	40 CM	12
BFM.117Y.50.01	50 CM	12
BFM.117Y.60.01	60 CM	12
BFM.117Y.80.01	80 CM	12



▶ MAXIMA SHOWER DRAIN WITH MAMBRANE

CODE	SIZE	PCS IN
BFM.117Y.30.0M	30 CM	12
BFM.117Y.40.0M	40 CM	12
BFM.117Y.50.0M	50 CM	12
BFM.117Y.60.0M	60 CM	12
BFM.117Y.80.0M	80 CM	12

MAXIMA SHOWER DRAIN



DN 50 Horizontal and vertical outlet - compatible with PVC pipe connections, blocking odor by water (285mg). The flow rate is 48 liters/min. Resistant against external chemical effects, operating temperature is between -30°C and $+75^{\circ}\text{C}$. The and grid is made of 304 grade stainless steel.

Advantages

It has a quality and stylish-looking with its 304 grade stainless steel grid. It can be easily applied on the floor. It prevents the bad smell coming from the waste water system with its two cleppers o'dor blocking and "S TYPE" outlet . It can be adjusted depending on the screed concrete with its adjustable height legs. High resistance against the organic and inorganic chemicals, resistant against most acidic and salty aqueous oxidation.

Areas of Usage

Common use of bathroom shower, hospital and hotel shower areas, locker-room shower areas etc.

Customized Production

Grid patterns can be chosen in gold, bronze or other optional colors in accordance with your desire.

Warning

It is not recommended to use high-density cleaners for a long-time.

* The referring size is 50 cm

QUATTRO



▶ QUATTRO SHOWER DRAIN

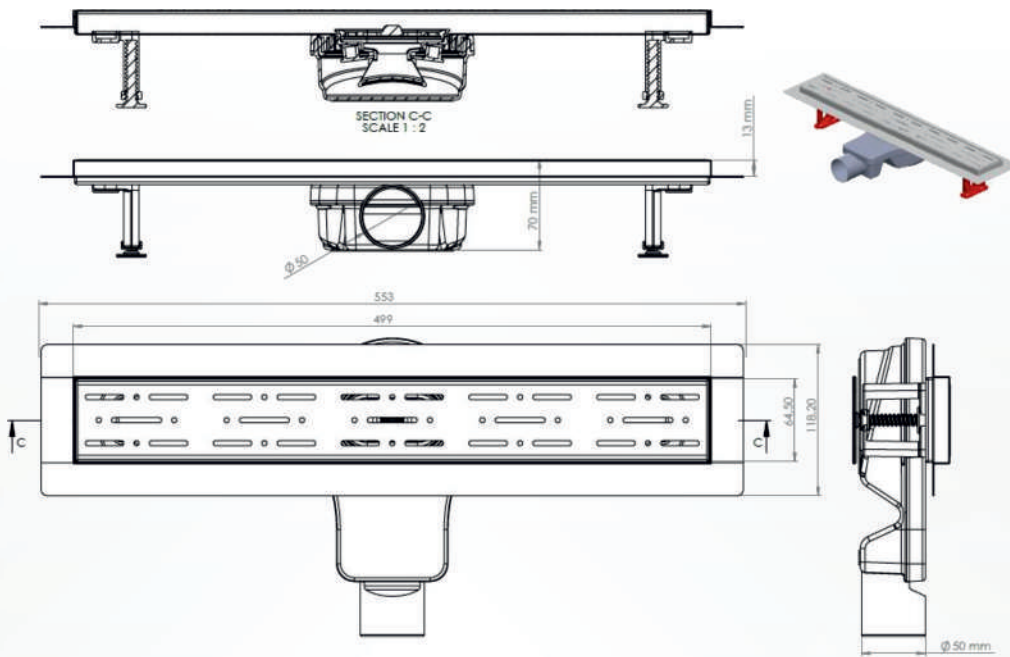
CODE	SIZE	PCS IN
BFM.118Y.30.01	30 CM	12
BFM.118Y.40.01	40 CM	12
BFM.118Y.50.01	50 CM	12
BFM.118Y.60.01	60 CM	12
BFM.118Y.80.01	80 CM	12



▶ QUATTRO GALA SHOWER DRAIN

CODE	SIZE	PCS IN
BFM.118Y.30.0D	30 CM	12
BFM.118Y.40.0D	40 CM	12
BFM.118Y.50.0D	50 CM	12
BFM.118Y.60.0D	60 CM	12
BFM.118Y.80.0D	80 CM	12

QUATTRO SHOWER DRAIN



DN 50 Horizontal and vertical outlet - compatible with PVC pipe connections, blocking odor by water (285mg). The flow rate is 48 liters/min. Resistant against external chemical effects, operating temperature is between -30°C and $+75^{\circ}\text{C}$. The and grid is made of 304 grade stainless steel.

Advantages

It has a quality and stylish-looking with its 304 grade stainless steel grid. It can be easily applied on the floor., It prevents the bad smell coming from the waste water system with its two cleppers o'dor blocking and "S TYPE" outlet . It can be adjusted depending on the screed concrete with its adjustable height legs. High resistance against the organic and inorganic chemicals, resistant against most acidic and salty aqueous oxidation.

Areas of Usage

Common use of bathroom shower, hospital and hotel shower areas, locker-room shower areas etc.

Customized Production

Grid patterns can be chosen in gold, bronze or other optional colors in accordance with your desire

Warning

It is not recommended to use high-density cleaners for a long-time.

* The referring size is 50 cm

QUATTRO



▶ QUATTRO SLIM LINE SHOWER DRAIN

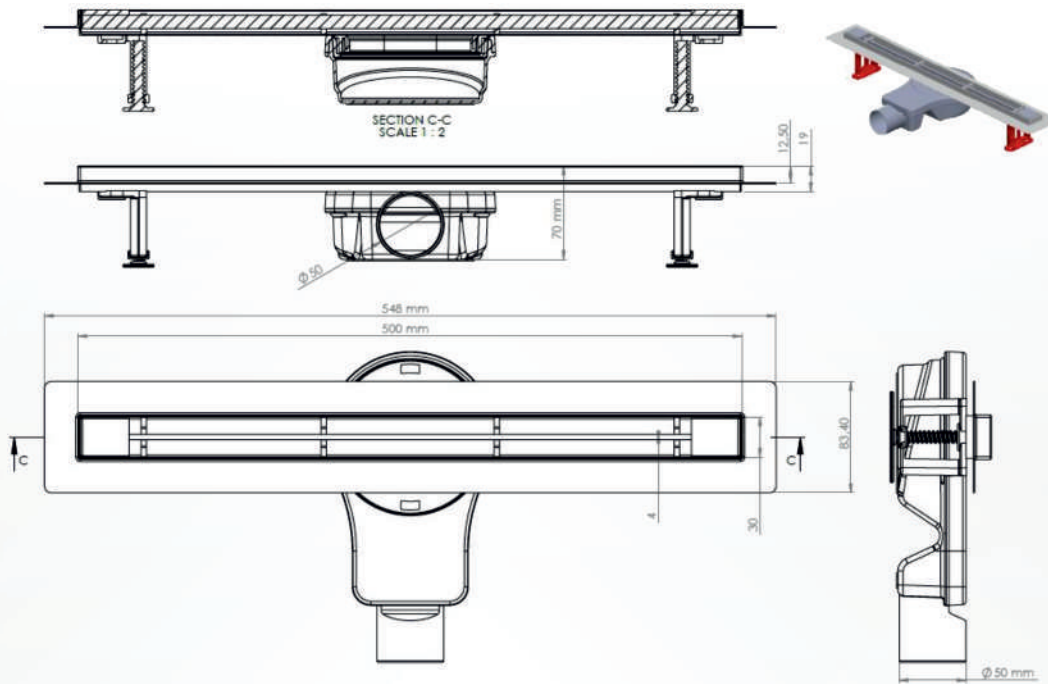
CODE	SIZE	PCS IN
BFM.119Y.50.01	50 CM	12
BFM.119Y.60.01	60 CM	12
BFM.119Y.70.01	70 CM	12
BFM.119Y.80.01	80 CM	12



▶ QUATTRO SLIM SOLID SHOWER DRAIN

CODE	SIZE	PCS IN
BFM.119Y.50.0D	50 CM	12
BFM.119Y.60.0D	60 CM	12
BFM.119Y.70.0D	70 CM	12
BFM.119Y.80.0D	80 CM	12

QUATTRO SLIM LINE SHOWER DRAIN



DN 50 Horizontal and vertical outlet - compatible with PVC pipe connections, blocking odor by water (285mg). The flow rate is 41 liters/min. Resistant against external chemical effects, operating temperature is between -30°C and $+75^{\circ}\text{C}$. The and grid is made of 304 grade stainless steel.

Advantages

It has a quality and stylish-looking with its 304 grade stainless steel grid. It can be easily applied on the floor., It prevents the bad smell coming from the waste water system with its two cleppers o'dor blocking and "S TYPE" outlet . It can be adjusted depending on the screed concrete with its adjustable height legs. High resistance against the organic and inorganic chemicals, resistant against most acidic and salty aqueous oxidation.

Areas of Usage

Common use of bathroom shower, hospital and hotel shower areas, locker-room shower areas etc.

Customized Production

Grid patterns can be chosen in gold, bronze or other optional colors in accordance with your desire.

Warning

It is not recommended to use high-density cleaners for a long-time.

* The referring size is 50 cm

SLIMEX



▶ SLIMEX LINE SHOWER DRAIN

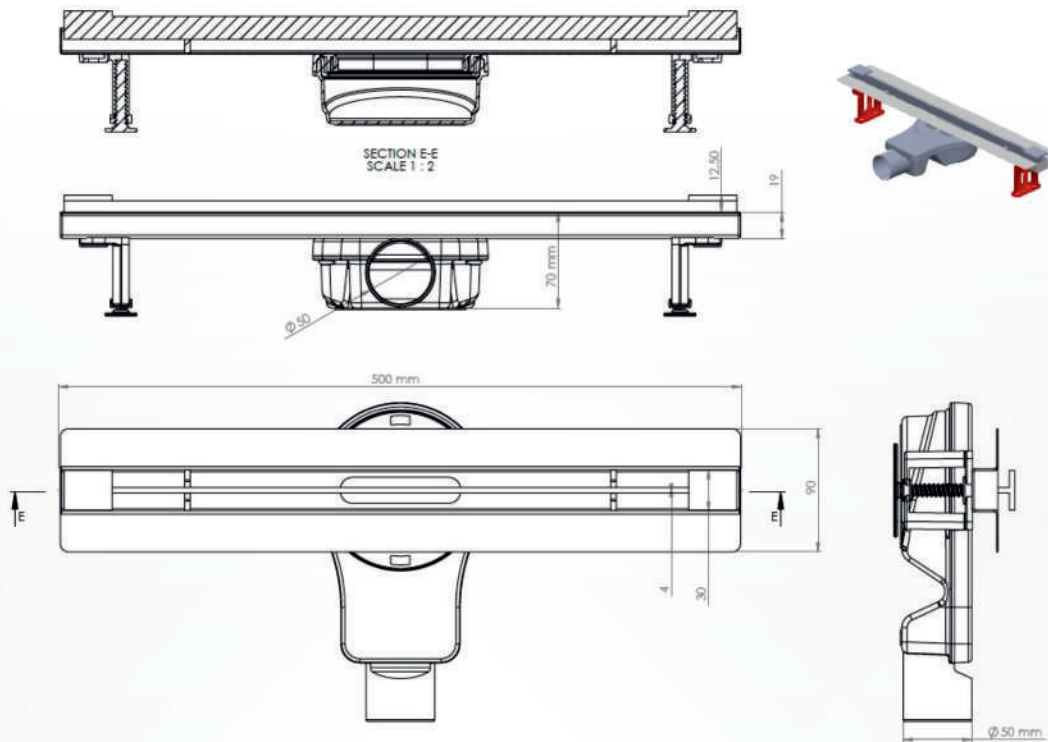
CODE	SIZE	PCS IN
BFM.120Y.50.01	50 CM	12
BFM.120Y.60.01	60 CM	12
BFM.120Y.70.01	70 CM	12
BFM.120Y.80.01	80 CM	12



▶ SLIMEX SOLID SHOWER DRAIN

CODE	SIZE	PCS IN
BFM.120Y.50.0D	50 CM	12
BFM.120Y.60.0D	60 CM	12
BFM.120Y.70.0D	70 CM	12
BFM.120Y.80.0D	80 CM	12

SLIMEX LINE SHOWER DRAIN



DN 50 Horizontal and vertical outlet - compatible with PVC pipe connections, blocking odor by water (285mg). The flow rate is 41 liters/min. Resistant against external chemical effects, operating temperature is between -30°C and $+75^{\circ}\text{C}$. The and grid is made of 304 grade stainless steel.

Advantages

It has a quality and stylish-looking with its 304 grade stainless steel grid. It can be easily applied on the floor., It prevents the bad smell coming from the waste water system with its two cleppers o'dor blocking and "S TYPE" outlet . It can be adjusted depending on the screed concrete with its adjustable height legs. High resistance against the organic and inorganic chemicals, resistant against most acidic and salty aqueous oxidation.

Areas of Usage

Common use of bathroom shower, hospital and hotel shower areas, locker-room shower areas etc.

Customized Production

Grid patterns can be chosen in gold, bronze or other optional colors in accordance with your desire.

Warning

It is not recommended to use high-density cleaners for a long-time.

* The referring size is 50 cm

DRAIN

➤ 10*10 FULL SS DRAIN



CODE	SIZE	PCS IN
BFM.130P.1001	10*10	50

➤ 15*15 FULL SS DRAIN



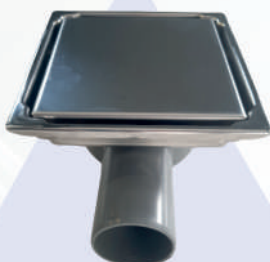
CODE	SIZE	PCS IN
BFM.130P.1501	15*15	30

➤ 20*20 FULL SS DRAIN



CODE	SIZE	PCS IN
BFM.130P.2001	20*20	20

➤ 10*10 ROTATION



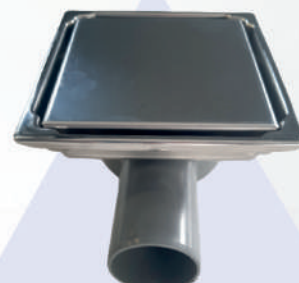
CODE	SIZE	PCS IN
BFM.130Y.1001	10*10	20

➤ 15*15 ROTATION



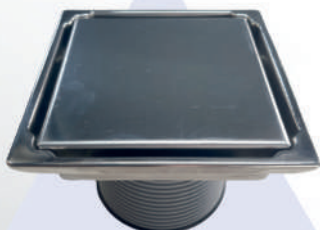
CODE	SIZE	PCS IN
BFM.130Y.1501	15*15	16

➤ 20*20 ROTATION



CODE	SIZE	PCS IN
BFM.130Y.2001	20*20	12

➤ 10*10 DRAIN DIRECT



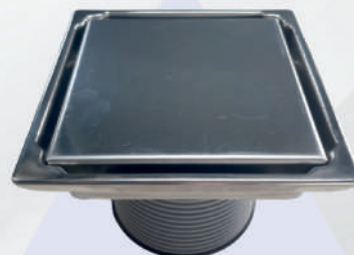
CODE	SIZE	PCS IN
BFM.130K.1001	10*10	20

➤ 15*15 DRAIN DIRECT



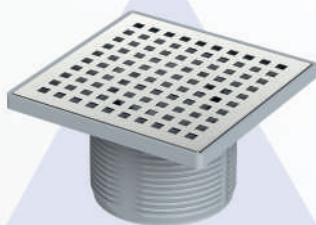
CODE	SIZE	PCS IN
BFM.130K.1501	15*15	16

➤ 20*20 DRAIN DIRECT

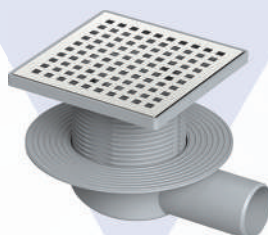


CODE	SIZE	PCS IN
BFM.130K.2001	20*20	12

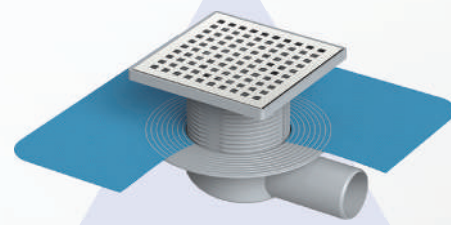
► 10*10 - 15*15 DRAIN



CODE	SIZE	PCS IN
BFM.132.1010.OS	10*10	24
BFM.132.1515.OS	15*15	24



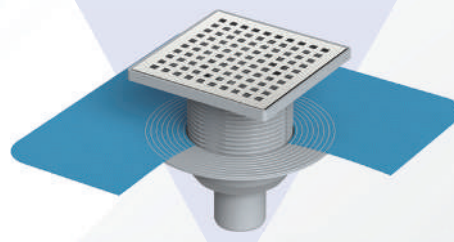
CODE	SIZE	PCS IN
BFM.132.1010.YS	10*10	24
BFM.132.1515.YS	15*15	24



CODE	SIZE	PCS IN
BFM.132.1010.YSM	10*10	24
BFM.132.1515.YSM	15*15	24



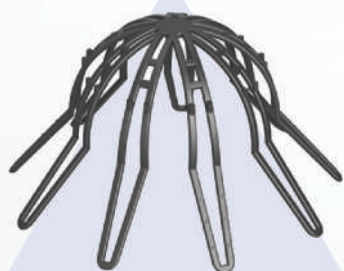
CODE	SIZE	PCS IN
BFM.132.1010.AS	10*10	24
BFM.132.1515.AS	15*15	24



CODE	SIZE	PCS IN
BFM.132.1010.ASM	10*10	24
BFM.132.1515.ASM	15*15	24

DRAIN

▶ 10*10 - 15*15 DRAIN



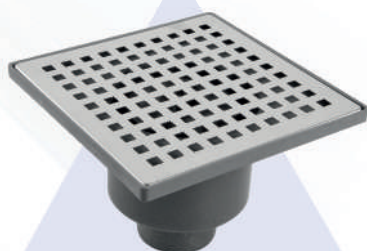
CODE	SIZE	PCS IN
BFM.300.1007	LEAF HOLDER	24



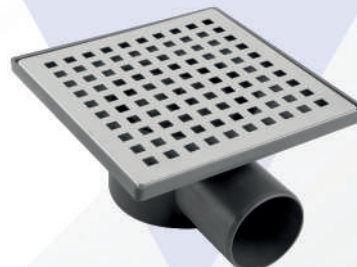
CODE	SIZE	PCS IN
BFM.300.1010Y.S1	10*10	24



CODE	SIZE	PCS IN
BFM.300.1010A.S1	10*10	24

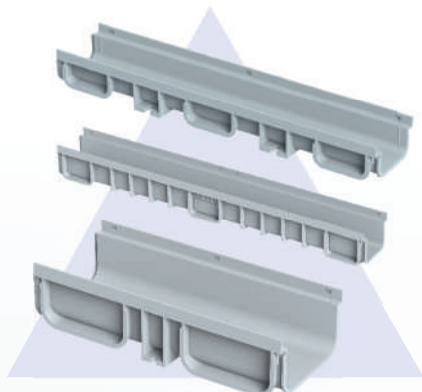


CODE	SIZE	PCS IN
BFM.300.1515Y.S1	15*15	24



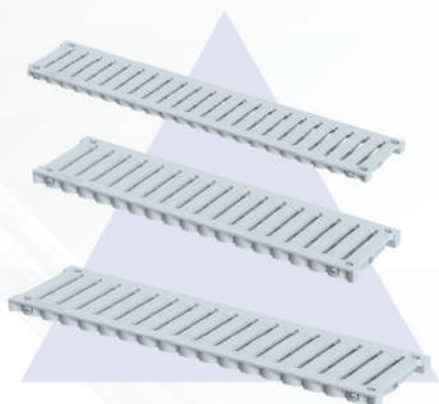
CODE	SIZE	PCS IN
BFM.300.1515A.S1	15*15	24

PLASTIC DRAINAGE CHANNEL



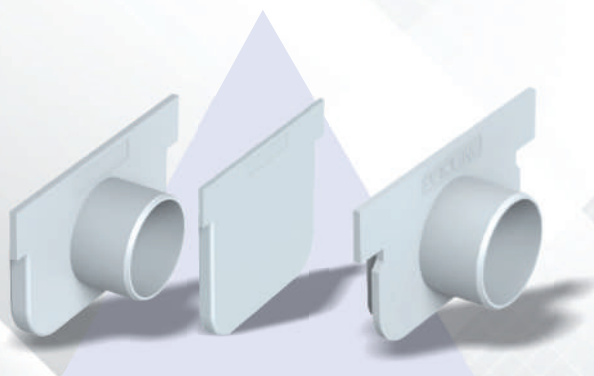
CODE	SIZE	PCS IN
BFM.4001.Y	100*500	12
BFM.4002.A	100*500	12
BFM.4003.Y	130*500	12
BFM.4004.A	130*500	12
BFM.4005.Y	130*1000	12
BFM.4006.A	130*1000	12
BFM.4007.Y	200*500	12
BFM.4008.Y	200*500	12

PLASTIC GRILL



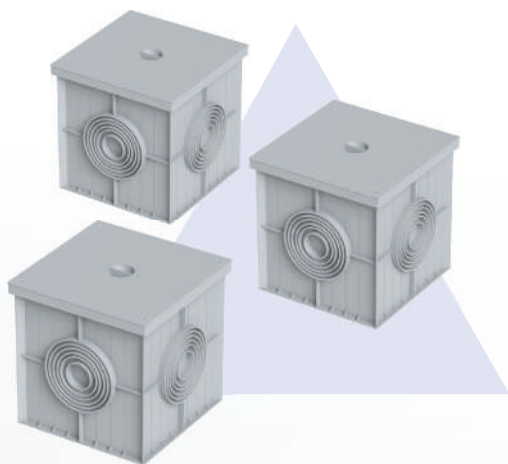
CODE	SIZE	PCS IN
BFM.4009.I	100*500	12
BFM.4010.I	130*500	12
BFM.4010.IM	130*1000	12
BFM.4011.I	200*500	12

CAP WITH OUTLET



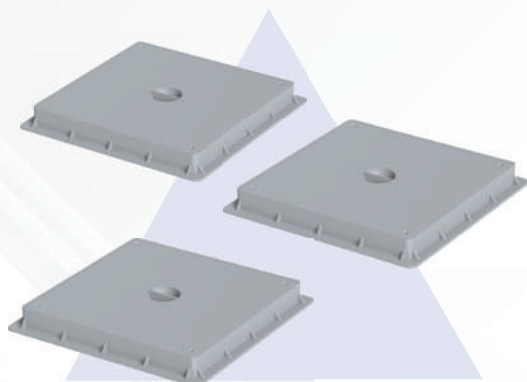
CODE	SIZE	PCS IN
BFM.4012.C	100*500	12
BFM.4013.C	130*500-130*1000	12
BFM.4014.C	130*500-130*1000	12
BFM.4015.C	200*500	12

BOX & COVER



CODE	SIZE	PCS IN
BFM.300.1008	20*20	12
BFM.300.1009	30*30	12
BFM.300.1010	40*40	12
BFM.300.1011	50*50	12
BFM.300.1012	55*55	12

FRAME & COVER



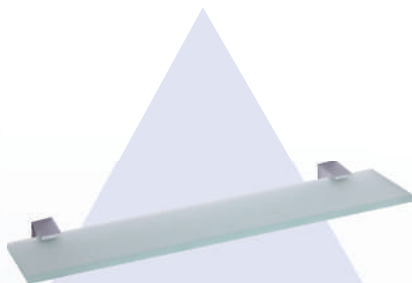
CODE	SIZE	PCS IN
BFM.300.1013	20*20	12
BFM.300.1014	30*30	12
BFM.300.1015	40*40	12
BFM.300.1016	50*50	12
BFM.300.1017	60*60	12

CHECK VALVE



CODE	SIZE	PCS IN
BFM.300.1018	110 Ø	12
BFM.300.1019	125 Ø	12
BFM.300.1020	160 Ø	12
BFM.300.1021	200 Ø	12

GAMA



CODE	SIZE
------	------

BFM.BAG.01	GAMA SHELF
------------	------------



CODE	SIZE
------	------

BFM.BAG.02	SOAP HOLDER
------------	-------------



CODE	SIZE
------	------

BFM.BAG.03	TUMBLE HOLDER
------------	---------------



CODE	SIZE
------	------

BFM.BAG.04	TOILET PAPER HOLDER
------------	---------------------



CODE	SIZE
------	------

BFM.BAG.05	TOILET PAPER HOLDER WITH LID
------------	---------------------------------



CODE	SIZE
------	------

BFM.BAG.06	LONG TOWEL HOLDER
------------	-------------------



CODE	SIZE
------	------

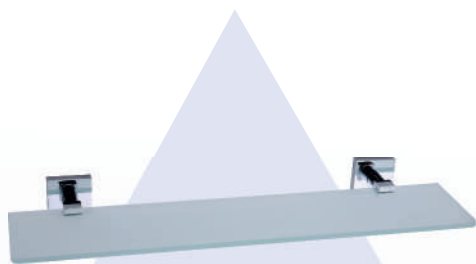
BFM.BAG.07	RING TOWEL HOLDER
------------	-------------------



CODE	SIZE
------	------

BFM.BAG.08	DOUBLE HOOK
------------	-------------

QUATTRO



CODE

SIZE

BFM.BAQ.01

QUATTRO SHELF



CODE

SIZE

BFM.BAQ.02

SOAP HOLDER



CODE

SIZE

BFM.BAQ.03

TUMBLE HOLDER



CODE

SIZE

BFM.BAQ.04

TOILET PAPER HOLDER



CODE

SIZE

BFM.BAQ.05

TOILET PAPER HOLDER
WITH LID



CODE

SIZE

BFM.BAQ.06

LONG TOWEL HOLDER



CODE

SIZE

BFM.BAQ.07

RING TOWEL HOLDER



CODE

SIZE

BFM.BAQ.08

DOUBLE HOOK

INTENSE



CODE

SIZE

BFM.BAI.01

INTENSE SHELF



CODE

SIZE

BFM.BAI.02

SOAP HOLDER



CODE

SIZE

BFM.BAI.03

TUMBLE HOLDER



CODE

SIZE

BFM.BAI.04

TOILET PAPER HOLDER



CODE

SIZE

BFM.BAI.05

TOILET PAPER HOLDER
WITH LID



CODE

SIZE

BFM.BAI.06

LONG TOWEL HOLDER



CODE

SIZE

BFM.BAI.07

RING TOWEL HOLDER



CODE

SIZE

BFM.BAI.08

DOUBLE HOOK



BFM TEKNİK YAPI MALZEMELERİ LTD. ŞTİ.

Hacımaşlı Mah. Haraççı Hadımköy Yolu Cad.

No: 145/1 Arnavutköy, İstanbul

info@villoren.com

www.villoren.com

